



MICHAEL CLOSE, E3

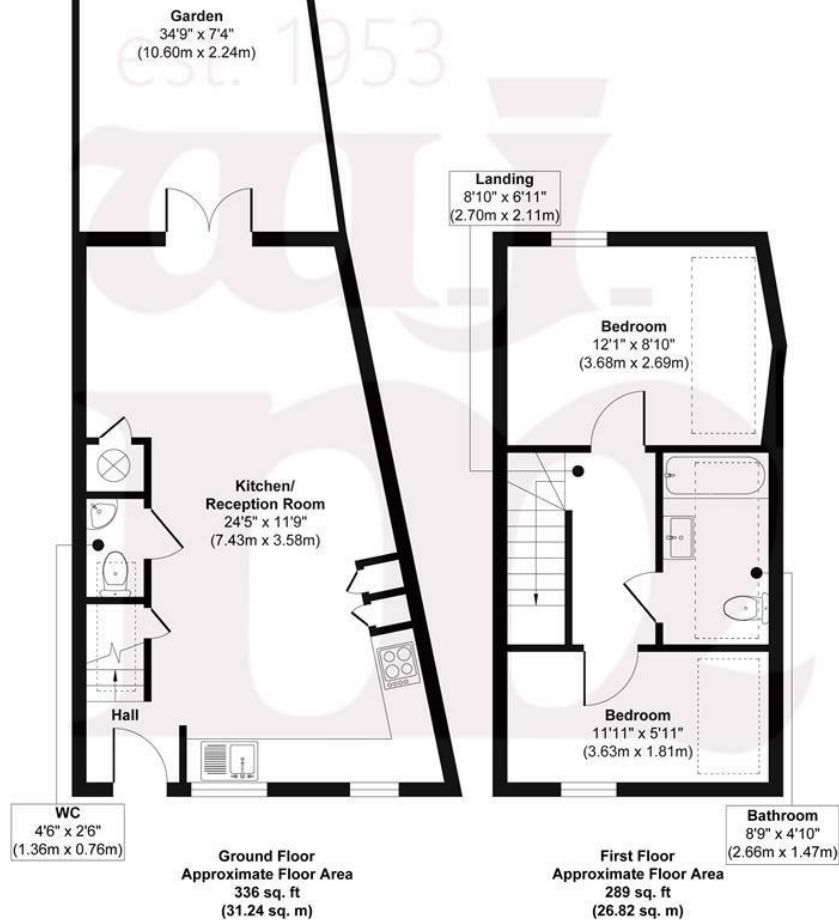
£525,000 FREEHOLD

- West facing rear garden
- Chain free
- Newly renovated
- Secluded development of just six freehold houses
- Secure off street parking
- Ideal starter home

wj.  
meade



# Michael Close



**Approx. Gross Internal Floor Area 625 sq. ft / 58.06 sq. m**

Illustration for identification purposes only, measurements are approximate, not to scale.  
Produced by Elements Property



WJ Meade are pleased to present this semi-detached freehold house, set within a small gated mews development within the Ropery Street Conservation Area. Arranged over 625sq ft, arranged as an open plan kitchen to reception with doors out to the private enclosed rear garden. There is a guest cloakroom on the ground floor, then on the first floor is a three piece bathroom suite plus the two bedrooms. Located conveniently for Mile End underground station, with easy access into The City and Canary Wharf. Within the surrounding neighbourhood you will find various public parks, canal side walks, shops, cafes and restaurants.

All sizes are approximate. The Agent has not tested any apparatus, equipment, fixtures and fittings, or services and so cannot verify that they are in working order or fit for the purpose. A buyer is advised to obtain verification from their Solicitors or Surveyor. Photographs are for illustration purposes only and may depict items, which are not for sale or included in the sale price. References to tenure of a property are based upon information supplied by the vendor. The agent has not had sight of the title documents, a buyer is advised to obtain verification from their solicitor. Money Laundering Regulations 2003: Intending purchasers will be asked to produce identification, documentation at a later stage and we would ask for your co-operation in order that there will be no delay in agreeing the sale.

These particulars are intended to give a fair description of the property only and are in no way guaranteed, nor do of any contract. They are issued on the express condition that all negotiations are conducted through W.J. Meade Estate Agents. All subject to contract and to being unsold.

Service charge £535.40  
Council tax band D  
Current EPC Rating 68  
Tenure: Freehold

